

361)

500

15

80

26





1

2

“ - - ”

2004

2005

2006

2007

3



4

5

.....	7
.....	8
.....	8
.....	9
.....	9
.....	14
.....	14
.....	15
.....	20
.....	20
.....	22
.....	24
.....	25
.....	25
.....	26
.....	27
.....	29
.....	29
.....	29
.....	30
.....	31
.....	31
.....	32
.....	32
.....	33
.....	34
.....	34
.....	34
.....	36
.....	37
.....	37
.....	38
.....	39
.....	39
.....	41
.....	42

.....	43
.....	45
.....	50
.....	52
.....	52
.....	77
.....	77
.....	88
.....	89
.....	89
.....	89
.....	91
.....	91
.....	92
.....	92
.....	92
.....	93
.....	100





	100
	AA AA
	2%

2008 4 17	
2008 4 21 2008 4 23	
2008 4 21 2008 4 25	

361

361

0731 8923977

0731 8923904

1

500

15

500

15

021 38784818

021 50818828

2

80

26

256

15

021-68866551

021-68864567

200120

3

111

22

0755-82033494

0755-82032850

518034

4

95

528

2205

021-68826801

021-68826800

200120

80

26

256

15

021 68862050

021 50543336

1

5

1

5

010 88381802

010 88381869

88

422

88

422

010 83915232

010 83913756

7008

7008

0755 82872732

0755 82872090

500

15

500

15

021 38784818

021 50818828

096783-30890868002

5045

0755- 82083333

0755- 82083164

1093

18

0755 25938000

0755 25988122





AA

AA

"

"

1

60%-70%

90%

2007 9 30

56.30%

2007 9 30

29.65% 41.15%

2

3

"

"

"

"

最近三年及一期的按揭销售情况表

(单位: 万元)

项 目	2004 年度	2005 年度	2006 年度	2007 年 1-9 月
按揭销售总额	85,792	64,392	130,109	209,981
销售收入总额	338,046	327,889	462,534	-

1

[2003]137

[2004]283

2000 10

2005 9

[2005]14

[2005]1

2005 10 2007 9

2

2007 9

2

2004 2005 2006

48,566 40,458 77,856

19.6% 16.82% 23.01%

2004 2005 2006 2,548.55 6,207.45 21,630.36

0.75% 1.89% 4.68%



"

"

AA

AA

"

"

1

(

1992 17.2% 2006 44.6%)

2



3

2006

2007 9 30

		2007 9 30
1		127,000
2		25,000
3		40,000
4		360,000
5		90,000
6		20,000
7		50,000
8		20,000
9		30,000
10		38,000
		800,000

2007 9 30

47.74

2007 3 14

"

			2006		AAA "	
2007	9	4			"	
			2006		AAA "	
2007	9	4			"	
					AAA "	
2007	9	4			"	
					AAA "	
2003	9	4				~
			AAA 4{	x		
				2003		

	2007 1-9	2006	2005	2004
	1.48	1.20	1.11	1.22
	0.87	0.70	0.70	0.73
	56.30%	55.78%	57.13%	53.14%
	21.12	10.24	7.43	12.22
	100%	100%	100%	100%
	100%	100%	100%	100%

= /

= /

= /

= /

= /

= /

	R	0	R
	R	0	R
	R	0	R
	R	0	R
*	R	0	R
	R	0	R
	R	0	R
	R	110,000	110,000+R

11

r,

$$R=110,000*r$$

1

2

3

1

						2004
	2005	2006				32.82
31.89		45.02	2007	1-9		61.15
	2004	2005	2006			
	8.05	7.88	11.60	2007	1-9	
9.09						

2

	2004	2005	2006	2007	1-9	
			3.51	3.66	3.81	1.27

3

2007 9

80

1

2

3

3.5

2

4

5

	2004	2005	2006	2007
	22.14	25.42	34.79	
56.60	3.7	5.1	8.17	7.37
		11		

“

1

2

3

4

”





10%



10%



,





50000.0001 2003
2006 12 31 5.31
5.13

021-38784818

1

2

1

2

3

4

5

6

-

-

-

-

-

-

-

7

8

1

2

3

4

1

2

3

4

5

6



7

8

9

1

1

2

10%

3

4

5

2

1

2

3



1

2 10%

3

4

5

6

10%

1 10%

2

3

4

5

1999 743

51%

49%

50 13,425 74.48%

10,000

7,475.25 2,375.79 74.75%

23.76% 37.24 0.37%

1999 8 8 1999 8 31

10,000

2000 128 2000 9 15

9 16 1.00 5000 ,

12.74 2000 10 12

“ ” “000157” 15,000

2001 9 2001

15,000 12,000 3,000

30,000

2002 10 2002
 9,000 39,000

2004 3 2003
 11,700 50,700

2007 4 2006
 25,350 76,050

[2004]3

[2005]86

2006 5 8 2006 5 18

10 3.2

2006 6 6

2006 7 14

	338,000,000	66.67%		283,920,000.00	56.00%
	252,663,450	49.84%		212,237,298	41.86%
	5,034,848	1%		72,536,067	0.84%
	80,301,702	15.83%		67,453,430	13.30%
A	169,000,000	33.33%	A	223,080,000	44.00%
	507,000,000	100%		507,000,000	100%

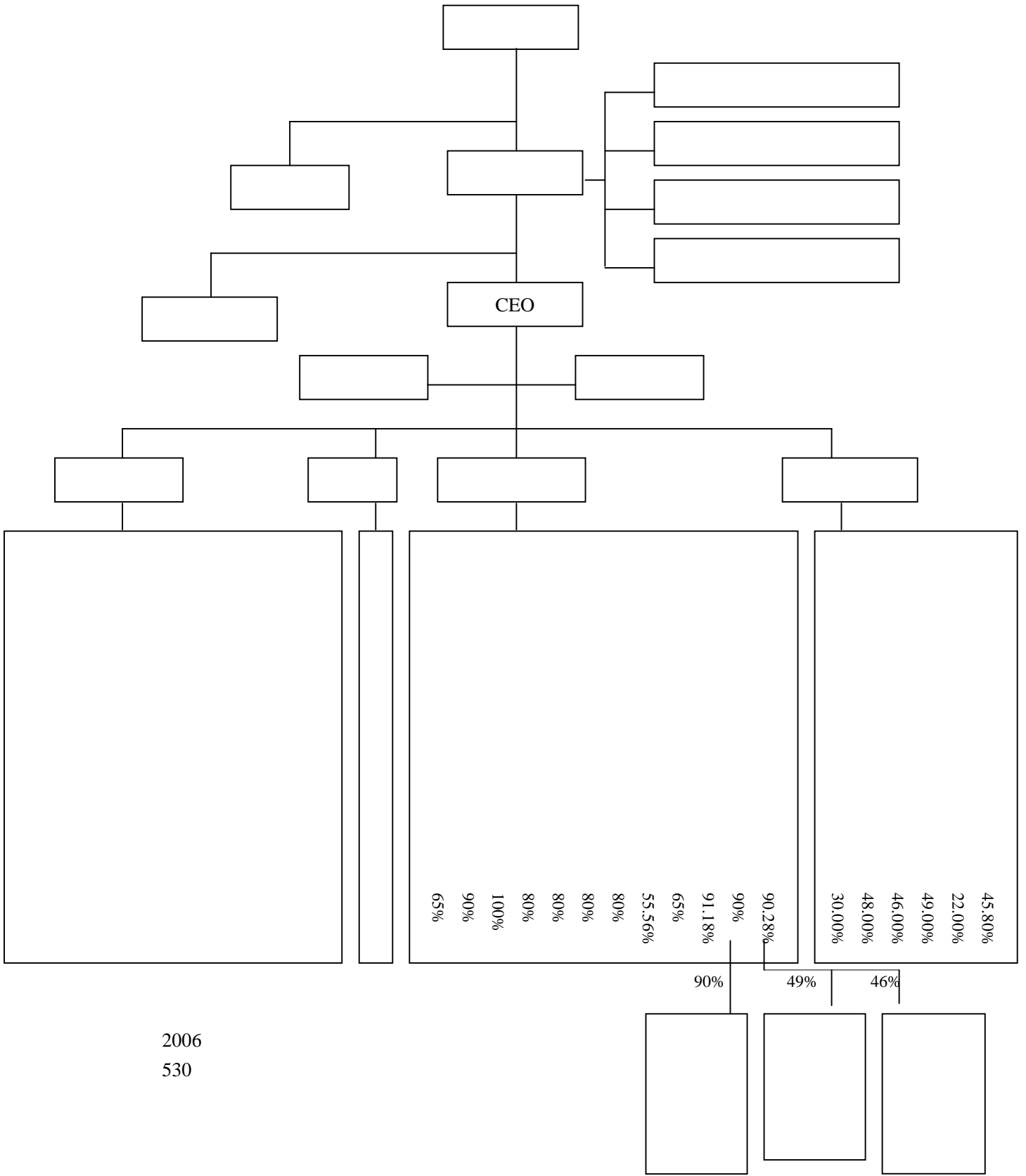
2007 9 30

1	-	-
2	28,033.09	36.86%
3	-	-

	-	-
	-	-
4	6,315.51	8.30%
	6,315.51	8.30%
	34,348.61	45.17%
1	41,701.39	54.83%
2	-	-
3	-	-
4	-	-
	41,701.39	54.83%
	76,050.00	100.00%

2007 9 30

		%)	
		41.86	318,355,947	280,330,947
(GOOD EXCEL GROUP LIMITED)		13.30	101,180,145	63,155,145
		2.00	15,203,690	0
MORGAN STANLEY & CO. INTERNATIONAL LIMITED		1.63	12,361,108	0
		1.35	10,302,678	0
		1.25	9,495,708	0
		1.13	8,581,988	0
		1.06	8,075,486	0
88		1.05	8,000,000	0
UBS AG		1.04	7,905,005	0



2006
530

31,835.59 41.86%
1956 25%
60,291.51

[2006]79
2006 3 29 32.1%
2006 4 30

Real Smart International Limited

8% 6.06% 18.04%

[2006]
39 8%

2006 189,456 108,795
15,051 22,793

2007 5 ,
, 2007 5 29
2007 2007

	%
	59.70
	18.04
	11.96
	8.00
	2.30

2007 6 21

[2007]127

2007 7 4

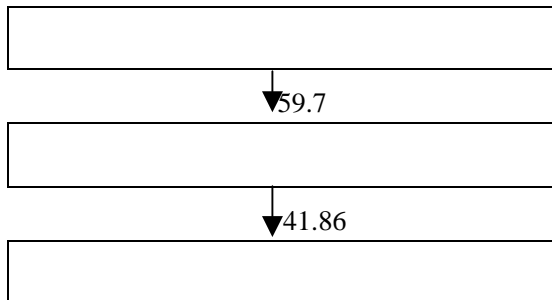
[2007]52

2007

7 12

41.86%

59.7%



2006

1

1992

)

Goldpark

600683

2000

2004

2005

2000—2004



2002

2004

2005

“ ”

“ ”

1983 7

2006 7

“ ”

“ ”

“ ”

“ ”

3

4

5

1

2

3



2004 2006

2004 2006

2007

2004 2006

	2006 12 31	2005 12 31	2004 12 31
	989,929,241.85	651,025,832.81	506,764,076.56
	-	-	-
	43,782,565.00	55,555,129.89	62,504,860.00
	-	-	-
	-	-	-
	932,706,984.55	917,203,218.63	822,536,772.43
	80,163,664.57	70,906,505.26	

2004 2006

2007 9 30

2007 9 30

	655,231,000.00	320,761,225.78
	-	-
	-	-
	-	-
	-	-
	761,545,974.00	529,359,524.00
	1,374,070,019.36	867,297,524.74
	683,340,511.99	339,625,097.03
	-	-
	-	-
	31,486,382.67	90,349,033.62
	-4,579,342.51	41,583,472.78
	-	-
	3,440.59	-
	489,898,014.18	208,219,722.77
	-	-
	-	-
	-	-
	-	-
	-	-
	-	-
	-	600,000,000.00
	3,990,996,000.28	2,997,195,600.72
	-	-
	300,000,000.00	8,630,000.00
	-	-
	-	4,696,787.17
	-	-
	-	-
	-	-
	-	-
	-	-
	300,000,000.00	13,326,787.17
	4,290,996,000.28	3,010,522,387.89
	-	-
	760,500,000.00	507,000,000.00
	240,650,497.84	494,150,497.84
	-	-
	240,376,459.33	240,376,459.33
	-	-

	1,959,281,171.71	1,073,194,534.84
	-1,399,714.70	-
	3,199,408,414.18	2,314,721,492.01
	38,159,885.02	40,675,786.62
	3,237,568,299.20	2,355,397,278.63
	7,528,564,299.48	5,365,919,666.52

2007 9 30

2004 2006

	2006	2005	2004
	4,625,341,143.35	3,278,885,397.01	3,380,456,152.49
	3,383,597,814.02	2,404,682,895.90	2,477,892,411.00
	19,144,433.63	26,158,255.73	16,471,807.73
	1,222,598,895.70	848,044,245.38	886,091,933.76
	3,854,957.82	2,819,663.11	12,099,860.85
	399,902,610.95	284,340,720.17	246,335,438.23
	265,166,724.81	206,387,659.27	214,596,763.33
	50,473,457.14	36,756,036.48	47,483,095.25
	510,911,060.62	323,379,492.57	389,776,497.80
	-5,971,741.41	-6,242,104.26	-607,667.89
	2,896,327.79	7,219,242.85	-
	2,402,141.99	1,604,405.51	302,348.08
	24,309,431.31	12,333,587.23	5,752,485.19
	485,928,357.68	313,627,449.44	383,718,692.80
	3,660,834.35	4,173,201.34	4,755,942.74
	1,367,352.97	-1,024,382.89	-3,889,703.42
	480,900,170.36	310,478,630.99	382,852,453.48

2007 1 9

	2007 1-9
	6,173,865,971.07
	6,173,865,971.07
	-
	-
	-
	5,269,508,844.11
	4,464,905,102.67
	-
	-
	-
	-
	-
	-
	-
	19,216,137.64
	414,784,495.01
	244,476,338.51
	46,859,612.22
	79,267,158.06
“_”	-
“_”	9,591,610.53
	-
“_”	-
“_”	913,948,737.49
	21,508,410.30
	37,502,326.45
	27,899,504.99
“_”	897,954,821.34
	-6,326,987.55
“_”	904,281,808.89
	906,366,636.87
	-2,084,827.98
	1.1918
	1.1918

2007 1-9

2004 2006

	2006	2005	2004
	5,628,227,463.73	3,743,415,647.66	3,613,044,318.37
	137,953.85	773,876.42	-
	8,375,075.51	3,254,405.51	2,453,812.01
	5,636,740,493.09	3,747,443,929.59	3,615,498,130.38
	4,328,001,483.20	2,525,105,266.83	2,820,764,626.67
	326,409,907.55	294,431,944.15	170,590,772.77
	280,540,728.32	196,230,120.13	169,190,871.07
	264,711,450.87	268,951,495.81	221,896,364.36
	5,199,663,569.94	3,284,718,826.92	3,382,442,634.87
	437,076,923.15	462,725,102.67	233,055,495.51
	9,864,780.00	-	-
	1,300,000.00	-	-
	27,505,295.67	11,682,285.43	1,701,139.94
	-	-	-
	38,670,075.67	11,682,285.43	1,701,139.94
	235,024,589.97	243,098,514.22	253,405,499.72
	12,225,019.00	2,300,000.00	34,373,931.91
	-	-	-
	247,249,608.97	245,398,514.22	287,779,431.63
	-208,579,533.30	-233,716,228.79	-286,078,291.69
	-	-	-
	-	-	-
	623,161,225.78	-	793,461,782.02
	871,749,831.00	1,149,563,093.65	-
	1,494,911,056.78	1,149,563,093.65	793,461,782.02
	1,320,663,093.65	979,775,770.00	604,965,888.00
	63,841,943.94	254,534,441.28	46,052,279.85
	-	-	-
	1,384,505,037.59	1,234,310,211.28	651,018,167.85
	110,406,019.19	-84,747,117.63	142,443,614.17
	-	-	-
	338,903,409.04	144,261,756.25	89,420,817.99

2004 2006

	2006	2005	2004
1			
	480,900,170.36	310,478,630.99	382,852,453.48
	1,367,352.97	-1,024,382.89	-3,889,703.42
	17,628,365.96	21,590,704.30	31,534,179.32
	79,354,755.79	50,844,909.98	37,612,412.82
	12,731,111.87	12,933,785.63	12,579,902.78
	203,852.88	203,852.88	203,852.88
	731,027.55	191,324.53	51,937.14
	8,105,964.10	-334,164.10	2,278,200.00
	14,801,696.89	4,762,423.52	253,404.87
	-	-	-
	43,561,943.94	51,734,441.28	48,634,559.18
	5,971,741.41	6,242,104.26	607,667.89
	-	-	-
	-520,628,871.10	-45,932,959.19	-260,933,211.69
	-103,509,745.33	-171,621,150.80	-395,920,134.27
	395,857,555.86	222,655,582.28	377,189,974.53
	-	-	-
	437,076,923.15	462,725,102.67	233,055,495.51
2			

	-196,934,576.80
	350,000.00
	350,000.00
	839,625,136.73
	658,154,283.00
	1,498,129,419.73
	805,155,362.51
	66,777,656.57
	635,222,057.00
	1,507,155,076.08
	-9,025,656.35
	-55,050,639.00
	989,929,241.85
	934,878,602.85

2007 1-9

2004 2006

	2006 12 31	2005 12 31	2004 12 31
	817,172,641.75	510,405,928.48	370,291,161.21
	-	-	-
	43,782,565.00	53,020,020.00	61,688,554.00
	-	-	-
	-	-	-
	926,690,957.88	906,745,747.69	808,271,939.04
	54,879,254.84	53,051,755.73	10,771,204.96
	179,505,916.13	94,218,667.50	75,347,688.68
	-	-	-
	1,456,257,720.42	924,548,320.02	886,753,990.14
	240,053.61	168,489.01	430,214.47
	-	-	-
	-	-	-
	3,478,529,109.63	2,542,158,928.43	2,213,554,752.50
	466,606,203.59	301,903,947.38	303,176,759.21
	-	-	-
	466,606,203.59	301,903,947.38	303,176,759.21
	1,148,495,935.33	1,072,640,431.38	589,264,721.49
	260,474,148.86	198,308,634.69	158,433,493.76
	888,021,786.47	874,331,796.69	430,831,227.73
	1,696,046.14	1,696,046.14	1,412,474.41
	886,325,740.33	872,635,750.55	429,418,753.32
	-	-	-
	208,446,040.69	83,272,774.61	267,876,555.61
	-	-	-
	1,094,771,781.02	955,908,525.16	697,295,308.93
	175,772,460.98	259,143,179.80	259,028,139.33
	-	-	-
	-	-	-
	175,772,460.98	259,143,179.80	259,028,139.33
	-	-	-
	5,215,679,555.22	4,059,114,580.77	3,473,054,959.97

2004 2006

	2006 12 31	2005 12 31	2004 12 31
	280,000,000.00	960,000,000.00	685,883,550.47
	523,959,524.00	238,294,979.69	102,205,984.02
	848,176,476.72	749,550,891.45	783,962,526.80
	343,265,780.83	142,938,394.42	113,815,670.05
	52,243,633.09	44,714,827.98	37,150,579.19
	18,417,214.28	15,170,101.37	13,897,161.23
	-	-	-

2007 9 30

	736,994,704.19	817,172,641.75
	-	-
	-	-
	-	-
	110,500,866.33	43,782,565.00
	1,678,233,050.91	926,690,957.88
	682,158,565.91	179,745,969.74
		-
		-
		-
		-
		-
	122,604,674.33	54,879,254.84
		-
	2,329,197,164.16	1,456,257,720.42
		-
		-
	5,659,689,025.83	3,478,529,109.63
		-
		-
		-
		-
	310,958,512.85	464,719,482.36
		-
	761,978,390.03	830,089,977.24

2007 9 30

	655,231,000.00	280,000,000.00
	-	-
	-	-
	-	-
	-	-
	761,545,974.00	523,959,524.00
	1,289,005,412.59	848,176,476.72
	699,017,608.56	343,265,780.83
	-	-
	-	-
	21,986,706.92	78,281,632.19
	362,282.92	38,402,512.82
	-	-
	3,440.59	-
	390,236,882.56	183,959,354.95
	-	-
	-	-
	-	-
	-	-
	-	-
	-	-
	-	600,000,000.00
	3,817,389,308.14	2,896,045,281.51
	-	-
	300,000,000.00	8,630,000.00
	-	-
	-	4,696,787.17
	-	-
	-	-
	-	-
	-	-
	300,000,000.00	13,326,787.17
	4,117,389,308.14	2,909,372,068.68
	-	-
	760,500,000.00	507,000,000.00
	240,650,497.84	494,150,497.84
	-	-
	239,787,773.62	239,787,773.62
	-	-

	1, 955, 135, 185. 99	1, 074, 858, 669. 20
	-	-
	3, 196, 073, 457. 45	2, 315, 796, 940. 66
	-	-
	3, 196, 073, 457. 45	2, 315, 796, 940. 66
	7, 313, 462, 765. 59	5, 225, 169, 009. 34

2007 9 30

2004 2006

	2006	2005	2004
	4,501,943,128.31	3,189,438,395.18	3,282,301,296.28
	3,324,901,028.24	2,376,394,863.66	2,462,328,721.83
	17,132,603.65	24,723,310.15	14,600,432.29
	1,159,909,496.42	788,320,221.37	805,372,142.16
	17,894,373.23	13,797,713.02	12,898,553.83
	373,344,727.47	225,571,567.92	185,541,141.08
	251,828,518.92	191,018,614.62	189,830,885.88
	51,826,614.34	39,580,797.65	38,313,455.40
	500,804,008.92	345,946,954.20	404,585,213.63
	-6,320,477.19	-24,740,480.38	-11,080,327.31
	34,640.00	-	-
	1,655,902.80	1,551,572.31	180,473.58
	14,666,604.08	10,381,476.17	5,715,668.47
	481,507,470.45	312,376,569.96	387,969,691.43
	301,976.85	390,281.08	-
	-	-	-
	481,205,493.60	311,986,288.88	387,969,691.43

2007 1-9

	2007 1-9
	6,115,291,324.45
	6,115,291,324.45
	-
	-
	-
	5,218,957,582.49
	4,431,727,843.13
	-
	-
	-
	-
	-
	-
	-
	-
	18,325,526.29
	398,022,827.29
	239,589,498.93
	44,157,651.95
	87,134,234.90
“_”	-
“_”	12,465,300.03
	-
“_”	-
“_”	908,799,041.99
	17,667,108.97
	34,156,272.67
	24,692,105.46
“_”	892,309,878.29
	-8,246,638.50
“_”	900,556,516.79
	900,556,516.79
	-
	-
	1.18416
	1.18416

2007 1-9

2004 2006

	2006	2005	2004
	5,454,111,711.84	3,666,669,663.87	3,495,834,174.73
	34,640.00	-	-
	5,908,043.63	2,001,572.31	1,765,716.40
	5,460,054,395.47	3,668,671,236.18	3,497,599,891.13
	4,312,197,188.73	2,628,767,205.41	2,643,075,938.47
	308,844,599.91	264,658,832.73	142,057,388.39
	207,571,505.14	163,832,360.14	144,021,749.84
	250,063,906.87	245,072,152.03	217,594,522.64
	5,078,677,200.65	3,302,330,550.31	3,146,749,599.34
	381,377,194.82	366,340,685.87	350,850,291.79
	9,565,500.00	-	-
	1,300,000.00	-	-
	12,907,523.39	9,337,580.30	1,701,139.94
	-	-	-
	23,773,023.39	9,337,580.30	1,701,139.94
	226,995,870.12	236,035,825.06	244,060,359.70
	800,000.00	22,300,000.00	17,525,931.91
	-	-	-
	227,795,870.12	258,335,825.06	261,586,291.61
	-204,022,846.73	-248,998,244.76	-259,885,151.67
	-	-	-
	-	-	-
	580,000,000.00	-	628,469,562.49
	871,749,831.00	1,088,900,000.00	-
	1,451,749,831.00	1,088,900,000.00	628,469,562.49
	1,260,000,000.00	814,783,550.47	604,965,888.00
	62,337,465.82	251,344,123.37	44,320,823.76
	-	-	-
	1,322,337,465.82	1,066,127,673.84	649,286,711.76
	129,412,365.18	22,772,326.16	-20,817,149.27
	-	-	-
	306,766,713.27	140,114,767.27	70,147,990.85

2004 2006

	2006	2005	2004
1			
	481,205,493.60	311,986,288.88	387,969,691.43
	-	-	-
	17,001,636.97	20,306,844.66	19,763,034.75
	69,073,942.78	42,342,358.23	32,197,129.00
	9,608,766.53	9,764,170.19	9,469,257.86
	-	-	-
	-71,564.60	261,725.46	606,747.92
	10,050,000.00	105,335.90	
	5,995,254.94	3,354,384.08	253,404.87
	-	-	-
	42,057,465.82	48,544,123.37	39,398,698.22
	6,320,477.19	24,740,480.38	11,080,327.31
	-	-	-
	-534,811,740.76	-38,570,510.87	-239,838,289.13
	-111,354,787.73	-168,796,132.18	-375,707,265.44
	386,302,250.08	112,301,617.77	465,657,555.00
	-	-	-
	381,377,194.82	366,340,685.87	350,850,291.79
2			
	-	-	-
	-	-	-

	-215,893,601.93
	825,231,000.00
	825,231,000.00
	750,000,000.00
	66,332,578.20
	816,332,578.20
	8,898,421.80
	-80,177,937.56
	817,172,641.75
	736,994,704.19

2007 1-9

2006
33 [2006]3 2007 1

1

1

2006 12 31	2, 297, 616, 406. 89
	-1, 851, 969. 76
	-2, 063, 134. 98
	211, 165. 22
	-
	-
	-
	-
	-
	-
	-
	-
	-
	-
	-
	-
	-
	-
	19, 632, 792. 36
()	40, 000, 049. 14
2007 1 1	2, 355, 397, 278. 63

2

1 2006 12 31 2,297,616,406.89

“ ”)

2006 12 31

2007 2 26

[2007] 01046

2006

2



2006 12 31

2,063,134.98

211,165.22

3,377.83

2007 1 1

1,851,969.76

3

18 -

19,632,792.36

2007 1 1

672,359.66

4

30 -

2006 12 31

40,000,049.14

2007 1 1

	2007	2006	2005	2004
	1.48	1.20	1.11	1.22
	0.87	0.70	0.70	0.73
	6.26*	4.91	3.72	5.21
	3.12*	2.79	2.62	3.20
%	56.30%	55.78%	57.13%	53.14%
	1.19	0.95	0.62	0.77
	4.21	4.55	3.43	3.21
	28.33%	20.86%	17.93%	23.84%
	0.17	0.75	0.72	0.69
	-0.11	0.61	0.28	0.14
	21.12	10.24	7.43	12.22

$$= /$$

$$= /$$

$$= / \quad /2+ \quad /2$$

$$* \text{ 2007} = / \quad /2+$$

$$/2 \quad *4/3$$

$$= / \quad /2+ \quad /2$$

$$* \text{ 2007} = / \quad /2+ \quad /2$$

*4/3

$$= /$$

$$= /$$

$$= /$$

$$= /$$

$$= /$$

$$= /$$

$$== /$$

	2007 9 30	2006 12 31	2005 12 31	2004 12 31
	73,699	81,717	51,041	37,029
	10.08%	15.67%	12.57%	10.66%
	167,823	92,669	90,675	80,827
	22.95%	17.77%	22.34%	23.27%
	68,216	17,951	9,422	7,535
	9.33%	3.44%	2.32%	2.17%
	232,920	145,626	92,455	88,675
	31.85%	27.92%	22.78%	25.53%
	565,969	347,853	254,216	221,355
	77.39%	66.69%	62.63%	63.74%
	76,198	88,633	87,264	42,942
	10.42%	16.99%	21.50%	12.36%
	108,166	109,477	95,591	69,730
	14.79%	20.99%	23.55%	20.08%
	23,778	17,577	25,914	25,903
	3.25%	3.37%	6.38%	7.46%
	26,116	17,577	25,914	25,903
	3.57%	3.37%	6.38%	7.46%
	731,346	521,568	405,911	347,305
	100.00%	100.00%	100.00%	100.00%

:

	2007	2006	2005	2004
)	167,823.31	92,669.10	90,674.57	80,827.19
	-	450,194.31	318,943.84	328,230.13
	611,529.13	-	-	-
	-	20.58%	28.43%	24.63%
	27.44%	-	-	-
	6.26*	4.91	3.72	5.12

*

/

/2+

/2 *4/3

20%-30%

2006
 80.41% 12.56%
 3.65% 2.08%
 0.84% 0.46%

	2007	2006	2005	2004
	232,919.72	145,625.77	92,454.83	88,675.40
%	-	43.80%	38.91%	36.01%
%	52.56%	-	-	-

2006 53.21% 07
 06 2007
 2007
 2007
 2004 2006

	2006	2005	2004
	51.15%	73.70%	63.46%
	53.27%	43.32%	44.50%
	52.28%	42.56%	57.94%

	2007 9 30		2006 12 31		2005 12 31		2004 12 31	
	65,523	15.91%	28,000	9.62%	96,000	41.40%	68,588	37.16%
	76,155	18.50%	52,396	18.01%	23,829	10.28%	10,221	5.54%
	128,901	31.31%	84,818	29.15%	74,955	32.32%	78,396	42.48%
	69,902	16.98%	34,327	11.80%	14,294	6.16%	11,382	6.17%
	0	0.00%	60,000	20.62%	0	0.00%	0	0.00%
	381,739	92.71%	289,605	99.54%	229,739	99.07%	181,832	98.52%
	30,000	7.29%	863	0.30%	863	0.37%	863	0.47%
	30,000	7.29%	1,333	0.46%	2,158	0.93%	2,736	1.48%
	411,739	100.00%	290,937	100.00%	231,898	100.00%	184,568	100.00%

90% 2007 9

30 30000 20000

10000

1000

	2007 9 30	2006 12 31	2005 12 31	2004 12 31
	65,523.10	28,000.00	96,000.00	68,588.36
	0.00	60,000.00	0.00	0.00
	30,000.00	863.00	863.00	863.00
	95,523.10	88,863.00	96,863.00	69,451.36
	23.20%	30.54%	41.77%	37.63%

2004 2006

2006

2006

7.62%

2007

	2007	2006	2005	2004
	69,901.76	34,326.58	14,293.84	11,381.57
	-	450,194.31	318,943.84	328,230.13
	611,529.13	-	-	-
	-	7.62%	4.48%	3.47%
	11.43%	-	-	-

	2007 1-9	2006	2005	2004
	12,681.72	38,137.72	36,634.07	35,085.03
	-21,589.36	-20,402.28	-24,899.82	-25,988.52
	889.84	12,941.24	2,277.23	-2,081.71
	-8,017.79	30,676.67	14,011.48	7,014.80

07 1-9

07 1-9

07 1-9

1 07 1-9

93%

98%

5%

2007 1-9

2007

2

1

	2007	2006	2005	2004
	57.00%	56.29%	57.59%	53.67%
	56.30%	55.78%	57.13%	53.14%
	1.48	1.20	1.11	1.22
	0.87	0.70	0.70	0.73
	21.12	10.24	7.43	12.22

50% 60%

1

7

2

50% 60%

2

	2007	2006	2005	2004
	6.26*	4.91	3.72	5.12
	3.12*	2.79	2.62	3.20

* 2007 = / /2+
 /2 *4/3 2007 = / /2+
 /2 *4/3

1

	2007	2006	2005	2004
	-	450,194.31	318,943.84	328,230.13
	611,529.13	-	-	-
	-	115,990.95	78,832.02	80,537.21
	68,177.00	67,699.99	45,617.10	41,368.55
	1,246.53	-632.05	-2,474.05	-1,108.03
	-1,648.92	-1,301.07	-882.99	-553.52
	89,230.99	48,150.75	31,237.66	38,796.97
	-824.66	30.20	39.03	0.00
	90,055.65	48,120.55	31,198.63	38,796.97

2005 2004 2006 2005 41%

2007

06

5% 2006

	2006	2005	2004
	3.72%	4.42%	3.32%
	-1.31%	-7.93%	-2.86%
	0.01%	0.00%	0.00%
	-2.70%	-2.83%	-1.43%

2

1

	2007 1-9		2006		2005		2004	
	277,730.42	45.42%	221,832.98	47.96%	170,860.04	52.11%	146,892.94	43.45%
	250,060.20	40.89%	156,947.48	33.93%	95,291.50	29.06%	129,109.16	38.19%
	33,102.89	5.41%	23,534.78	5.09%	14,997.78	4.57%	20,983.85	6.21%
	37,203.39	6.08%	36,885.21	7.97%	30,894.50	9.42%	28,136.71	8.32%
	13,432.23	2.20%	23,333.66	5.04%	15,844.72	4.83%	12,922.96	3.82%
	611,529.13	100.00%	462,534.11	100.00%	327,888.54	100.00%	338,045.62	100.00%

90%

80%

2

	2006		2005		2004	
	21,630.36	4.68%	6,207.45	1.89%	2,548.55	0.75%
	65,121.13	14.08%	48,304.04	14.73%	57,771.95	17.09%
	67,427.21	14.58%	58,772.61	17.92%	31,526.25	9.33%
	120,653.86	26.09%	79,806.40	24.34%	85,993.62	25.44%
	121,164.73	26.20%	87,296.57	26.62%	95,660.95	28.30%
	66,536.80	14.39%	47,501.44	14.49%	64,544.30	19.09%
	462,534.11	100.00%	327,888.53	100.00%	338,045.62	100.00%

50% 2006

2004

5%

3%

3

	2007 1-9	2006	2005	2004
	32.71%	23.98%	30.83%	25.14%
	23.60%	30.58%	24.60%	25.46%
	17.70%	31.40%	19.46%	28.85%
	31.94%	19.96%	29.00%	31.62%
	27.53%	26.85%	26.66%	26.7%

26.95%

1%

2

	2007 1-9	2006	2005	2004
	-	450,194.31	318,943.84	328,230.13
	611,529.13	-	-	-
	39,802.28	37,334.47	22,557.16	18,554.11
	23,958.95	25,182.85	19,101.86	18,983.09
	4,415.77	5,182.66	3,958.08	3,831.35
	68,177.00	67,699.99	45,617.10	41,368.55
		100.00%	100.00%	100.00%
	100.00%	-	-	-
	6.51%	8.29%	7.07%	5.65%
	3.92%	5.59%	5.99%	5.78%
	0.72%	1.15%	1.24%	1.17%
	11.15%	15.04%	14.30%	12.60%

	457,446.12	56,868.22	12.43%	35,883.26	7.84%	11,830.69	2.59%	104,582.17	22.86%
	258,407.49	5,815.26	2.25%	17,761.76	6.87%	4,682.05	1.81%	28,259.07	10.94%
	63,729.88	3,691.76	5.79%	4,055.41	6.36%	802.16	1.26%	8,549.34	13.41%
	151,295.36	7,322.05	4.84%	6,370.60	4.21%	2,277.20	1.51%	15,969.84	10.56%
	338,326.82	24,901.42	7.36%	11,140.97	3.29%	2,438.85	0.72%	38,481.24	11.37%
	518,212.76	26,212.72	5.06%	24,685.29	4.76%	610.60	0.12%	51,508.61	9.94%
	344067.51	12072.16	3.51%	18057.79	5.25%	3983.16	1.16%	34,113.11	9.91%
		5.89%		5.51%		1.31%		12.71%	

wind

2006

3

A

%

	2006	2005	2004
	21.05	10.42	17.17
	0.89	-12.13	3.1
	15.6	23.31	21.2
	4.79	0.86	4.48
	2.39	0.86	2.88
	19.01	12.92	16.27
	8.68	3.19	2.23
	10.34	5.63	9.62
	20.86	17.93	23.84

wind

%

	2006	2005	2004
	35.83	35.01	32.13
	10.51	8.67	12.89
	27.72	26.56	27.63
	11.32	9.68	12.17
	12.05	11.04	13.35
	18.39	16.4	17.53

	13.03	11.28	14.14
	18.41	16.95	18.55
	26.15	25.49	24.98

wind

2006

“ ” “ ”

“ ” “ ”

“ ” “ ”

“ ” “ ”

3-5

2007 9

30

110,000

	731,346.28	841,346.28
	411,738.93	521,738.93
%	56.30%	62.01%

2007 9 30

56.30%

62.01%



110,000
108,000 4.6

6.2

2007 7 12
2007

2007

2007 7 12

2007 6 18
2007

2007 6 18
2007

:

1		13,718.51	17,569.19	2006 099
2	90%	2,091.16	2,226.56	2006 091
3	40%	620.08	1,022.72	2006 092
4	6.47%	672.33	691.83	2006 093
			21,510.29	
1		58.54	52.38	2006 100
2		5,262.07	5,641.12	2006 094
3	45%	1,187.29	1,223.68	2006 086
4	67.43%	773.39	1,298.41	2006 089
5	20%	71.31	65.54	2006 059
6	20%	64.77	65.22	2006 082
7	9%	136.70	136.53	2006 064
8	75.49%	1,578.67	1,980.95	2006 090
			10,463.83	
1		6,134.71	8,008.19	2006 101
2	45.2%	4,696.95	4,833.20	2006 093
			12,841.39	
1	24.51%	512.56	643.17	2006 090
			45,458.68	

[2007]43

2007 3 20

4.6

31,729.355 .

5%

2007 9 30

2007 9 30





2008 4 17

2008 4 17

2008 4 17

2008 4 17

2008 4 17

3

9:00 11:00 3:00 5:00

361

0731 8923977

0731 8923904



2008 4 17